

3A Avg.

200 Volts

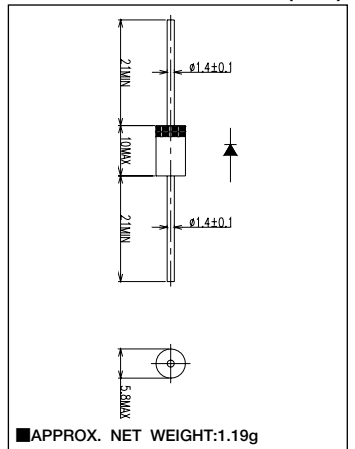
FRED

31DF2

■最大定格 Maximum Ratings

Item	Symbol	Conditions	Unit
くり返しピーク逆電圧 Repetitive Peak Reverse Voltage	$V_{RRM}$	200	V
非くり返しピーク逆電圧 Non-repetitive Peak Reverse Voltage	$V_{RSM}$	220	V
平均整流電流 Average Rectified Forward Current	$I_O$	50Hz、正弦半波通電抵抗負荷 50Hz Half Sine Wave Resistive Load	$T_a=40^{\circ}C$ *1 1.57 A
			$T_a=40^{\circ}C$ *2 3.0 A
実効順電流 R.M.S. Forward Current	$I_{F(RMS)}$	4.71	A
サージ順電流 Surge Forward Current	$I_{FSM}$	60 50Hz正弦半波、1サイクル、非くり返し 50Hz Half Sine Wave, 1cycle, Non-repetitive	A
動作接合温度範囲 Operating Junction Temperature Range	$T_{jw}$	-40~+150	$^{\circ}C$
保存温度範囲 Storage Temperature Range	$T_{stg}$	-40~+150	$^{\circ}C$

■OUTLINE DRAWING(mm)



■APPROX. NET WEIGHT:1.19g

■電氣的・熱的特性 Electrical/Thermal Characteristics

Item	Symbol	Conditions	Min.	Typ.	Max.	Unit
ピーク逆電流 Peak Reverse Current	$I_{RM}$	$T_j=25^{\circ}C, V_{RM}=V_{RRM}$	—	—	10	$\mu A$
ピーク順電圧 Peak Forward Voltage	$V_{FM}$	$T_j=25^{\circ}C, I_{FM}=3A$	—	—	0.98	V
逆回復時間 Reverse Recovery Time	$t_{rr}$	$I_{FM}=3A, -di/dt=50 A/\mu s, T_j=25^{\circ}C$	—	—	30	ns
熱抵抗 Thermal Resistance	$R_{th(j-a)}$	接合部・周囲間 Junction to Ambient	—	—	80	$^{\circ}C/W$
			—	—	34	$^{\circ}C/W$

\*1: 単体フィン無し / Without Fin or P.C. Board

\*2: 銅版フィン付き(両側) / With Cu Fin (20×20×1t, L=5mm, Both Sides)

■定格・特性曲線

FIG.1

順電圧特性  
FORWARD CURRENT VS. VOLTAGE

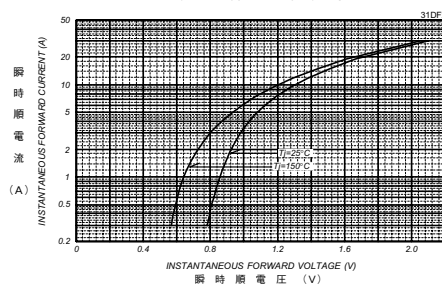


FIG.2

平均順電力損失特性  
AVERAGE FORWARD POWER DISSIPATION

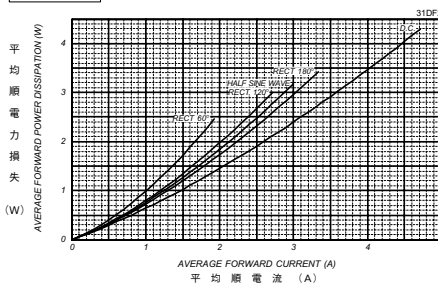


FIG.3

平均順電流一周囲温度定格  
AVERAGE FORWARD CURRENT VS. AMBIENT TEMPERATURE  
Without Fin or P.C. Board

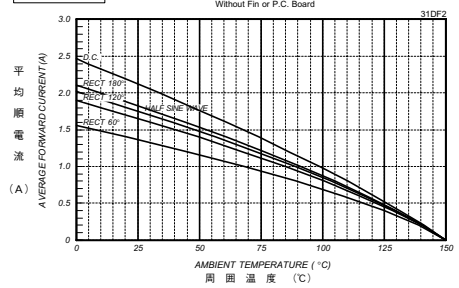


FIG.4

平均順電流一周囲温度定格  
AVERAGE FORWARD CURRENT VS. AMBIENT TEMPERATURE  
With Cu Fin (20×20×1t, L=5mm, Both sides)

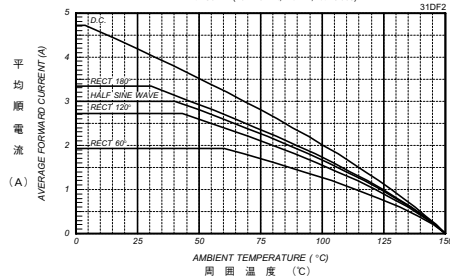


FIG.5

サージ順電流定格  
SURGE CURRENT RATINGS  
f=50Hz, Half Sine Wave, Non-Repetitive, No Load

